

# State of Wyoming Corner Record

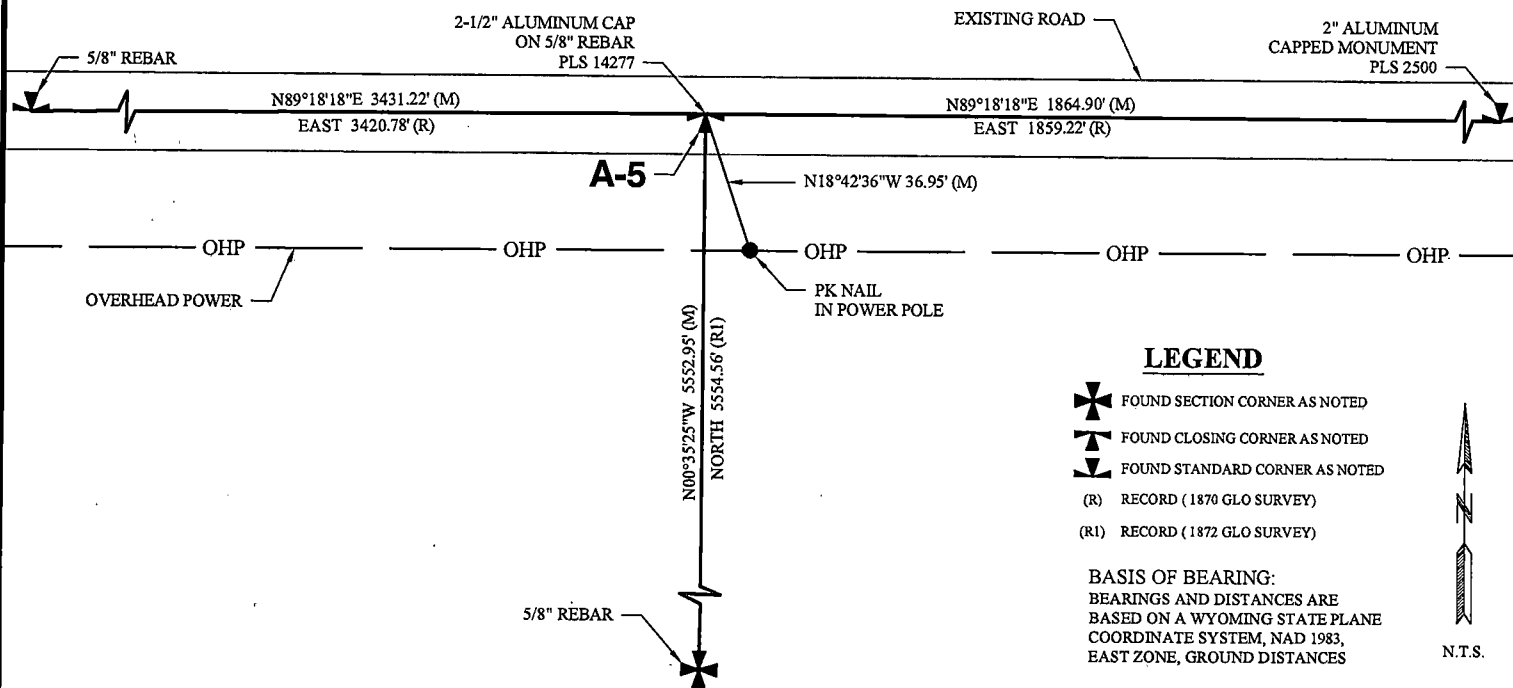
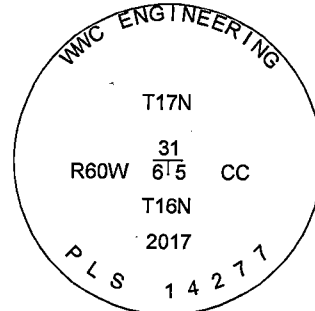
(In compliance with the CORNER PERPETUATION AND FILING ACT, Wyoming Statutes, 1997, Section 33-29-140, et seq., and the Rules and Regulations of the Board of Registration for Professional Engineers and Professional Land Surveyors)

Reverse side of this form may be used if more space is needed.

Record of original survey and citation of source of historical information (if corner is lost or obliterated.) Description of corner monumentation evidence found and/or monument and accessories established to perpetuate the location of this corner. Sketch of relative location of monument, accessories, and reference points with course and distance to adjacent corner(s) (if determined in this survey). Method and rationale for reestablishment of lost or obliterated corner.

**EVIDENCE RECORD:** 1872 GLO Survey: North between sections 5 & 6, 84.16 chains. Set sand stone 20"x12"x3" for closing corner to sections 5 & 6.

**EVIDENCE FOUND:** July 2017: Sand stone from 1872 GLO survey not found. Set a 2 1/2" aluminum cap marked as shown on a 5/8" rebar, 25" long, 8" below road surface at single proportionate position between standard corner common to sections 31 & 36 and standard corner common to sections 31 & 32.



### LEGEND

- FOUND SECTION CORNER AS NOTED
- FOUND CLOSING CORNER AS NOTED
- FOUND STANDARD CORNER AS NOTED
- (R) RECORD (1870 GLO SURVEY)
- (R1) RECORD (1872 GLO SURVEY)

**BASIS OF BEARING:**  
BEARINGS AND DISTANCES ARE BASED ON A WYOMING STATE PLANE COORDINATE SYSTEM, NAD 1983, EAST ZONE, GROUND DISTANCES



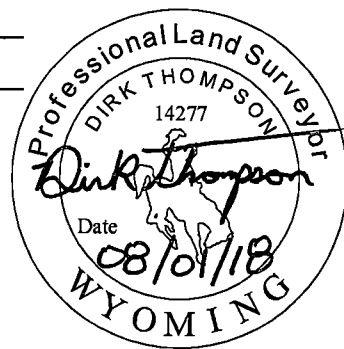
Date of Field Work: July 26, 2017 Office Reference: 2017-135

### CROSS INDEX DIAGRAM

|   |   |    |   |   |   |    |   |   |   |    |    |    |    |    |    |    |    |    |    |    |    |    |    |    |    |   |
|---|---|----|---|---|---|----|---|---|---|----|----|----|----|----|----|----|----|----|----|----|----|----|----|----|----|---|
|   | 1 | 2  | 3 | 4 | 5 | 6  | 7 | 8 | 9 | 10 | 11 | 12 | 13 | 14 | 15 | 16 | 17 | 18 | 19 | 20 | 21 | 22 | 23 | 24 | 25 |   |
| A |   |    |   |   | ● |    |   |   |   |    |    |    |    |    |    |    |    |    |    |    |    |    |    |    |    | A |
| B |   |    |   |   |   |    |   |   |   |    |    |    |    |    |    |    |    |    |    |    |    |    |    |    |    | B |
| C |   | 6  |   |   |   | 5  |   |   |   | 4  |    |    |    | 3  |    |    |    |    | 2  |    |    |    |    |    | 1  | C |
| D |   |    |   |   |   |    |   |   |   |    |    |    |    |    |    |    |    |    |    |    |    |    |    |    |    | D |
| E |   |    |   |   |   |    |   |   |   |    |    |    |    |    |    |    |    |    |    |    |    |    |    |    |    | E |
| F |   |    |   |   |   |    |   |   |   |    |    |    |    |    |    |    |    |    |    |    |    |    |    |    |    | F |
| G |   | 7  |   |   |   | 8  |   |   |   | 9  |    |    |    | 10 |    |    |    |    | 11 |    |    |    |    |    | 12 | G |
| H |   |    |   |   |   |    |   |   |   |    |    |    |    |    |    |    |    |    |    |    |    |    |    |    |    | H |
| J |   |    |   |   |   |    |   |   |   |    |    |    |    |    |    |    |    |    |    |    |    |    |    |    |    | J |
| K |   |    |   |   |   |    |   |   |   |    |    |    |    |    |    |    |    |    |    |    |    |    |    |    |    | K |
| L |   | 18 |   |   |   | 17 |   |   |   | 16 |    |    |    | 15 |    |    |    |    | 14 |    |    |    |    |    | 13 | L |
| M |   |    |   |   |   |    |   |   |   |    |    |    |    |    |    |    |    |    |    |    |    |    |    |    |    | M |
| N |   |    |   |   |   |    |   |   |   |    |    |    |    |    |    |    |    |    |    |    |    |    |    |    |    | N |
| O |   |    |   |   |   |    |   |   |   |    |    |    |    |    |    |    |    |    |    |    |    |    |    |    |    | O |
| P |   | 19 |   |   |   | 20 |   |   |   | 21 |    |    |    | 22 |    |    |    |    | 23 |    |    |    |    |    | 24 | P |
| Q |   |    |   |   |   |    |   |   |   |    |    |    |    |    |    |    |    |    |    |    |    |    |    |    |    | Q |
| R |   |    |   |   |   |    |   |   |   |    |    |    |    |    |    |    |    |    |    |    |    |    |    |    |    | R |
| S |   |    |   |   |   |    |   |   |   |    |    |    |    |    |    |    |    |    |    |    |    |    |    |    |    | S |
| T |   | 30 |   |   |   | 29 |   |   |   | 28 |    |    |    | 27 |    |    |    |    | 26 |    |    |    |    |    | 25 | T |
| U |   |    |   |   |   |    |   |   |   |    |    |    |    |    |    |    |    |    |    |    |    |    |    |    |    | U |
| V |   |    |   |   |   |    |   |   |   |    |    |    |    |    |    |    |    |    |    |    |    |    |    |    |    | V |
| W |   |    |   |   |   |    |   |   |   |    |    |    |    |    |    |    |    |    |    |    |    |    |    |    |    | W |
| X |   | 31 |   |   |   | 32 |   |   |   | 33 |    |    |    | 34 |    |    |    |    | 35 |    |    |    |    |    | 36 | X |
| Y |   |    |   |   |   |    |   |   |   |    |    |    |    |    |    |    |    |    |    |    |    |    |    |    |    | Y |
| Z |   |    |   |   |   |    |   |   |   |    |    |    |    |    |    |    |    |    |    |    |    |    |    |    |    | Z |

Land Surveyor / Firm / Address  
Dirk Thompson  
WWC Engineering  
1849 Terra Avenue  
Sheridan, WY 82801  
 Telephone: (307) 672-0761

This corner record was prepared by me or under my direction and supervision.  
**SEAL & SIGNATURE**



RECP #: 739870  
 RECORDED 10/1/2018 AT 1:31 PM BK# 2598 PG# 304  
 Debra K. Lee, CLERK OF LARAMIE COUNTY, WY. PAGE 1 OF 1  
 Section: 6 T 16N R 60W ; 6TH P.M. Cross-Index No.: A-5